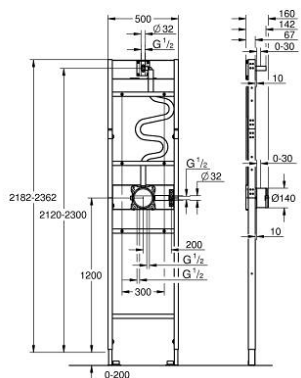


10 399 399 90 **RAPIDO SHOWER FRAME ELEMENT FOR MONO CONCEALED SHOWER INSTALLATION**



PRODUCT DESCRIPTION

- for shower installations with one hand shower and a Mono head shower
- pre-mounted rough-in set GROHE Rapido SmartBox (35 604)
- pre-mounted wall outlets for hand and head shower
- pre-mounted and insulated mixed water pipes
- for on-the-wall installations or dry-cladding
- powder coated steel frame, self-supporting
- completely pre-assembled
- depth adjustable
- 2 inlets below, 1/2"
- min. installation depth (from rough wall to end finish) 77-107 mm
- min. installation depth (from rough wall to frame front) 67 mm
- head shower outlet height adjustable by 180 mm
- sealing fleeces
- leak test done ex factory
- suitable for concealed 2-function trim sets in combination with GROHE Rapido SmartBox
- suitable for GROHE shower outlet elbows with male connection threads, 1/2"
- suitable for GROHE shower arms with male connection threads, 1/2"
- perfect fit with Grohtherm concealed shower systems 103 995 0000 and 103 996 0000
- for on-the-wall installation please order wall brackets 103 999 9990 (sold separately)
- professional edition



10 399 399 90 **RAPIDO SHOWER FRAME ELEMENT FOR MONO CONCEALED SHOWER INSTALLATION**

No exploded view is available for this spare part list.

SPARE PARTS

1: Replacement kit for seal (Spare part-nr. 48263000)

2: Wall brackets for shelf (Spare part-nr. 1039999990)*

* Optional accessories