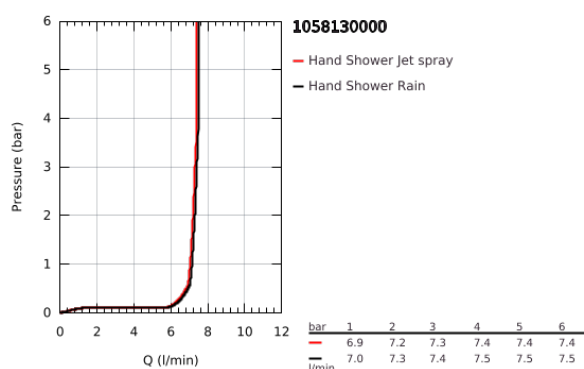
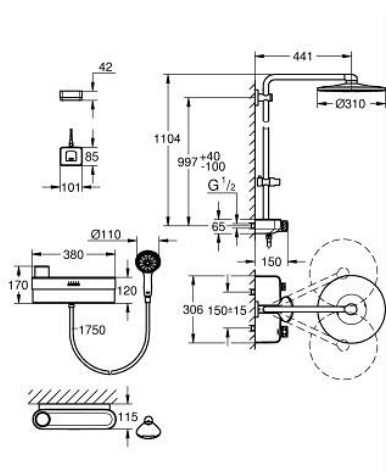


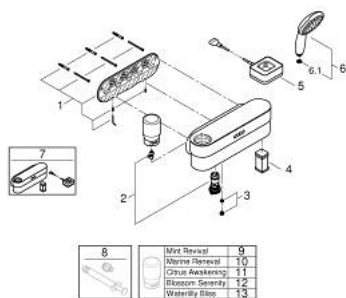
10 581 300 00 EUPHORIA PUREFOAM SHOWER SYSTEM WITH THERMOSTAT FOR WALL MOUNTING



PRODUCT DESCRIPTION

- Colour: chrome
- consisting of:
 - GROHE Purefoam device in white with glass top cover
 - including lithium-ion rechargeable battery (103385), charger with power plug Type C (103384) and Type G (103386) and soaps starter kit (fragrances: Mint 250 ml, Marine 2 x 250 ml, Citrus 2 x 250 ml, Blossom 2 x 250 ml, Water lily 2 x 250 ml)
 - GROHE Purefoam - enveloping shower experience with instant warm foam
- Euphoria SmartControl system 310 Duo
- including horizontal 450 mm shower arm
- upper bracket adjustable for minimal adaption to existing drilling holes
- exposed SmartControl thermostat with integrated GROHE EasyReach shower tray
- allows change between:
 - head shower Rainshower SmartActive 310, 2 spray patterns: GROHE PureRain, ActiveRain, and hand shower
 - GROHE Purefoam 110 hand shower 2 sprays (Rain, Jet) with white sprayface (107 298)
- Silverflex shower hose 1250 mm (28 362)
- Silverflex shower hose 1750 mm 1/2" x 1/2" (28 388 000)
- maximum flow rate (at 3 bar): 16 l/min
- GROHE Purefoam device suitable for screwing (including screws and dowels) or gluing (glue 40 915 000 sold separately - 4 x needed)
- holding force: max. 5 kg
- the specified holding capacity is valid for static (slowly applied) load and intended use only

10 581 300 00 EUPHORIA PUREFOAM SHOWER SYSTEM WITH THERMOSTAT FOR WALL MOUNTING



SPARE PARTS

- 1: Fixing set (Spare part-nr. 107444K000)
- 2: Filter set (Spare part-nr. 107442LN00)
- 3: Flow restrictor + inlet filter (Spare part-nr. 1074439990)
- 4: Battery (Spare part-nr. 1033859990)
- 5: Charger (Spare part-nr. 1033849990)
- 6: Hand shower 2 sprays (Spare part-nr. 1072980000)
- 6.1: Strainer (Spare part-nr. 0700200M)
- 7: Exchange device (Spare part-nr. 107445LN00)
- 8: Glue for bath accessories (Spare part-nr. 40915000)*
- 9: Foaming body soap Mint/refreshing (Spare part-nr. 1033699990)*
- 10: Foaming body soap Marine/moisturizing (Spare part-nr. 1033809990)*
- 11: Foaming body soap Citrus/invigorating (Spare part-nr. 1033819990)*
- 12: Foaming body soap Blossom/nourishing (Spare part-nr. 1033829990)*
- 13: Foaming body soap Water lily/calming (Spare part-nr. 1033839990)*
- * Optional accessories