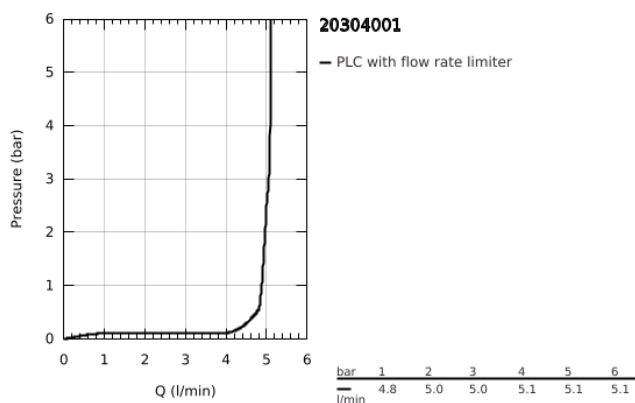
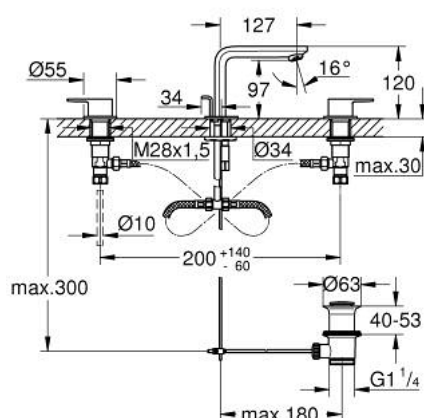


20 304 001 LINEARE THREE-HOLE BASIN MIXER 1/2" M-SIZE

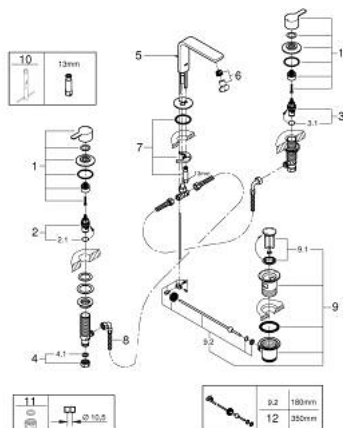


PRODUCT DESCRIPTION

- Colour: chrome
- metal lever
- ceramic headparts 1/2", 90°
- GROHE Long-Life finish
- GROHE Water Saving - Less water, perfect flow
- maximum flow rate (at 3 bar): 5 l/min
- GROHE FastFixation installation system
- pop-up waste set 1 1/4"
- pressure-proof flexible connection hoses between spout and side valves
- min. recommended pressure 1.0 bar
- union nut 1/2" x 10.5 mm



20 304 001 LINEARE THREE-HOLE BASIN MIXER 1/2" M-SIZE



SPARE PARTS

- 1: Handle pair (Spare part-nr. 48357000)
 - 2: Ceramic headpart 1/2" (Spare part-nr. 45882000)
 - 2.1: O-Ring Ø18,2 x Ø1,7 (Spare part-nr. 0392400M)
 - 3: Ceramic headpart 1/2" (Spare part-nr. 45883000)
 - 3.1: O-Ring Ø18,2 x Ø1,7 (Spare part-nr. 0392400M)
 - 4: Coupling nut 1/2" x 14.5 mm (Spare part-nr. 1290200M)
 - 4.1: Fibre seal dia. Ø 18,5 x Ø 12 x 2 (Spare part-nr. 0138900M)
 - 5: Pop-up rod (Spare part-nr. 65196000)
 - 6: Mousseur (Spare part-nr. 13994000)
 - 7: Shank mounting kit (Spare part-nr. 46671000)
 - 8: Flexible connection hose (Spare part-nr. 45704000)
 - 9: Waste set 1 1/4" (Spare part-nr. 28910000)
 - 9.1: Plug (Spare part-nr. 07182000)
 - 9.2: Eccentric rod (Spare part-nr. 07052000)
 - 10: Mounting wrench (Spare part-nr. 19017000)*
 - 11: Coupling nut 1/2" (Spare part-nr. 1290100M)*
 - 12: Eccentric rod (Spare part-nr. 07341000)*
- * Optional accessories