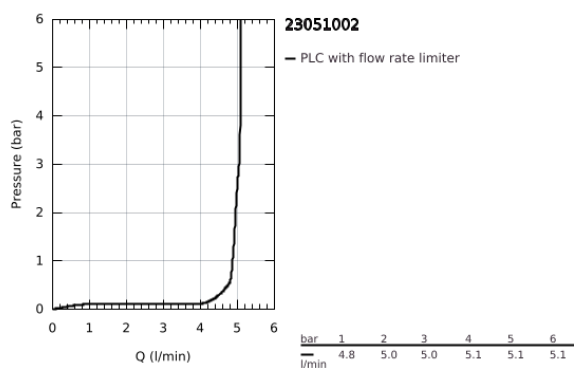
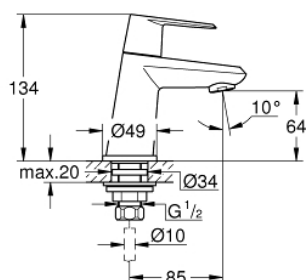


## 23 051 002 EURODISC COSMOPOLITAN PILLAR TAP XS-SIZE

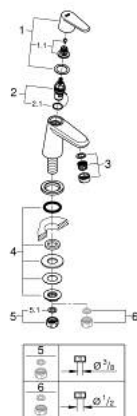


### PRODUCT DESCRIPTION

- Colour: chrome
- single hole installation
- metal lever
- ceramic headpart 1/2", 90°
- GROHE Long-Life finish
- GROHE Water Saving - Less water, perfect flow
- maximum flow rate (at 3 bar): 5 l/min
- SpeedClean mousseur
- union nut 1/2" x 10.5 mm
- min. recommended pressure 1.0 bar
- noise classification I in accordance with DIN 4109



## 23 051 002 EURODISC COSMOPOLITAN PILLAR TAP XS-SIZE



### SPARE PARTS

- 1: Handle (Spare part-nr. 48060000)
- 1.1: Replacement handle connection kit (Spare part-nr. 45186000)
- 1.1.1: O-Ring Ø18,2 x Ø1,7 (Spare part-nr. 0392400M)
- 2: Ceramic headpart, 1/2" (Spare part-nr. 45882000)
- 2.1: O-Ring Ø18,2 x Ø1,7 (Spare part-nr. 0392400M)
- 3: Flow restrictor (Spare part-nr. 48159000)
- 4: Shank fastening assembly (Spare part-nr. 45000000)
- 5: Coupling nut 1/2" x 10.5 mm (Spare part-nr. 1290100M)
- 5.1: Fibre seal dia. Ø 18,5 x Ø 12 x 2 (Spare part-nr. 0138900M)
- 6: Coupling nut 1/2" x 14.5 mm (Spare part-nr. 1290200M)\*

\* Optional accessories