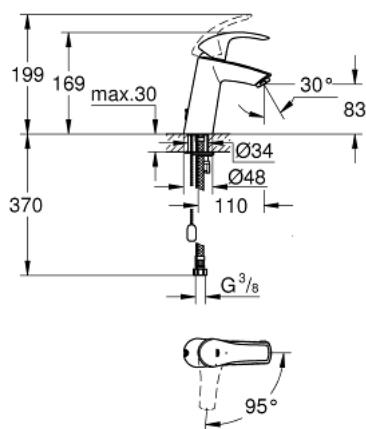


## 23 394 10E EUROSMART BASIN MIXER 1/2" M-SIZE

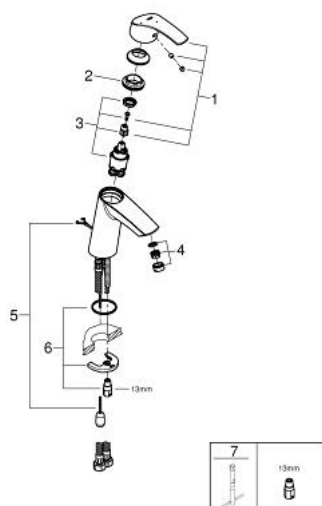


### PRODUCT DESCRIPTION

- Tyc: Chrome
- single hole installation
- metal lever
- GROHE SilkMove Energy Saving 28 mm ceramic cartridge with energy saving function via cold start
- with temperature limiter
- GROHE Long-Life finish
- GROHE Water Saving - Less water, perfect flow
- maximum flow rate (at 3 bar): 5 l/min
- GROHE FastFixation rapid installation system
- retractable chain
- flexible connection hoses



## 23 394 10E EUROSMART BASIN MIXER 1/2" M-SIZE



### SPARE PARTS

- 1: Lever (Spare part-nr. 46865000)
- 2: Fitting ring (Spare part-nr. 46715000)
- 3: Cartridge (Spare part-nr. 46580000)
- 4: Mousseur (Spare part-nr. 48159000)
- 5: Chain (Spare part-nr. 06815000)
- 6: Shank mounting kit (Spare part-nr. 46249000)
- 7: Mounting wrench (Spare part-nr. 19017000)\*

\* Optional accessories