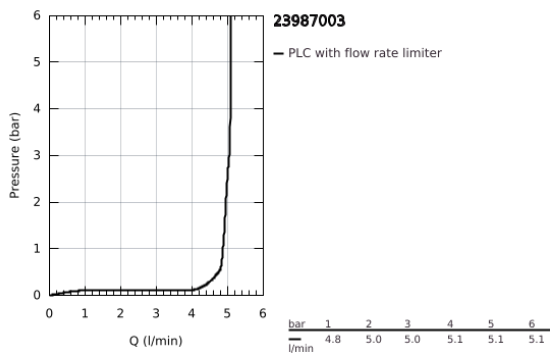
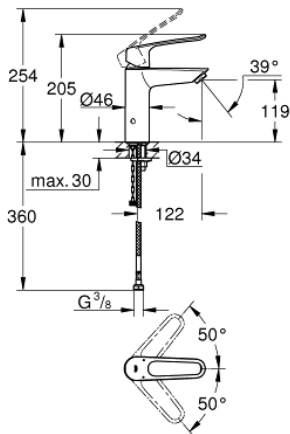


23 987 003 **EUROSMART BASIN MIXER 1/2"**  
**M-SIZE**

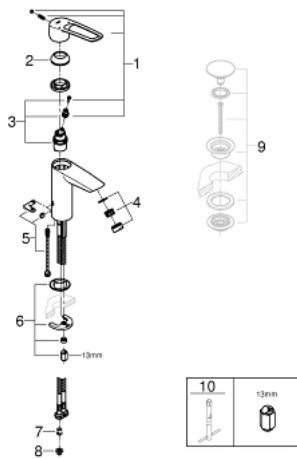


**PRODUCT DESCRIPTION**

- Colour: chrome
- thermostatic scalding protection
- maximum temperature adjustable
- thermal disinfection without re-adjustment of temperature
- tool for thermal disinfection included
- single hole installation
- loop metal lever
- lever length 130 mm
- GROHE SilkMove 28 mm ceramic cartridge
- adjustable flow rate limiter
- built-in non return valves
- dirt strainers
- Protected Water Ways no contact of water with lead or nickel inside the tap
- maximum flow rate (at 3 bar): 5 l/min
- laminar flow straightener
- GROHE FastFixation rapid installation system
- smooth body
- flexible connection hoses
- max. pressure differential 5:1
- professional exclusive



23 987 003 **EUROSMART BASIN MIXER 1/2"**  
**M-SIZE**



**SPARE PARTS**

- 1: Lever (Spare part-nr. 48577000)
- 2: Cap (Spare part-nr. 46116000)
- 3: Cartridge (Spare part-nr. 48518000)
- 4: Laminar flow straightener (Spare part-nr. 13960000)
- 5: SET F.EUR.33840 (Spare part-nr. 48578000)
- 6: Shank mounting kit (Spare part-nr. 46645000)
- 7: Non-return valve (Spare part-nr. 4257200M)
- 8: Filter (Spare part-nr. 4241300M)
- 9: Waste set with push-open plug (Spare part-nr. 65807000)\*
- 10: Mounting wrench (Spare part-nr. 19017000)\*

\* Optional accessories