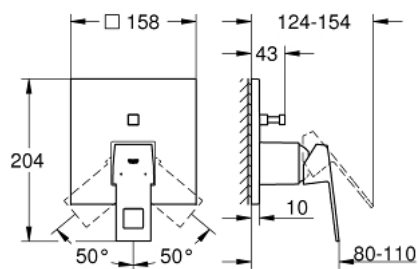


## 24 062 DC0 EUROCUBE SINGLE-LEVER MIXER WITH 2-WAY DIVERTER

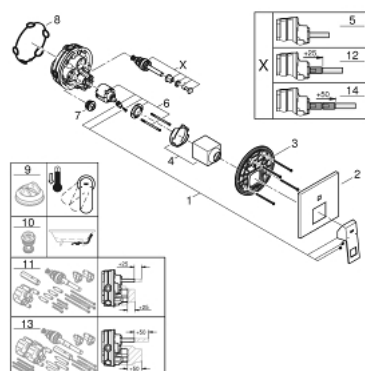


### PRODUCT DESCRIPTION

- Typ: supersteel
- trim set for GROHE Rapido SmartBox (35 600/35 604)
- GROHE SilkMove 46 mm ceramic cartridge
- GROHE LongLife finish
- GROHE FastFixation escutcheon with covered shaft sealing and covered fixing
- metal escutcheon, retroactively 6° adjustable
- metal lever
- automatic 2-way diverter
- without roughing-in set 35 600/35 604 (please order separately)
- flow performance: outlet B = 27 l/min, outlet C = 27 l/min



## 24 062 DC0 EUROCUBE SINGLE-LEVER MIXER WITH 2-WAY DIVERTER



### SPARE PARTS

- 1: Lever (Spare part-nr. 46782DC0)
  - 2: Escutcheon (Spare part-nr. 48431DC0)
  - 3: Mounting plate (Spare part-nr. 48438000)
  - 4: Cap (Spare part-nr. 46784DC0)
  - 5: Diverter (Spare part-nr. 48442DC0)
  - 6: Cartridge (Spare part-nr. 46048000)
  - 7: Non-return valve (Spare part-nr. 49085000)
  - 8: Seal (Spare part-nr. 48360000)
  - 9: Temperature limiter (Spare part-nr. 46375000)\*
  - 10: Backflow protection combination (EN1717) (Spare part-nr. 14055000)\*
  - 11: Universal extension set single-lever mixers, 25 mm (Spare part-nr. 1405600)\*
  - 12: Diverter (Spare part-nr. 48444DC0)\*
  - 13: Universal extension set single-lever mixers, 50 mm (Spare part-nr. 1405700)\*
  - 14: Diverter (Spare part-nr. 48445DC0)\*
- \* Optional accessories