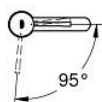
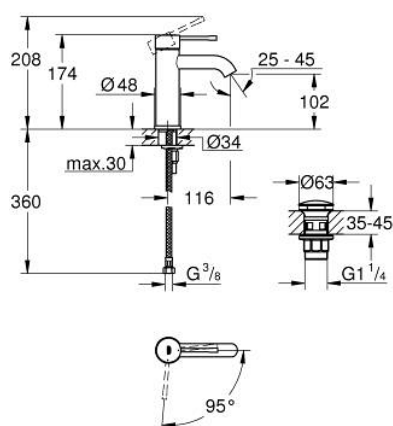
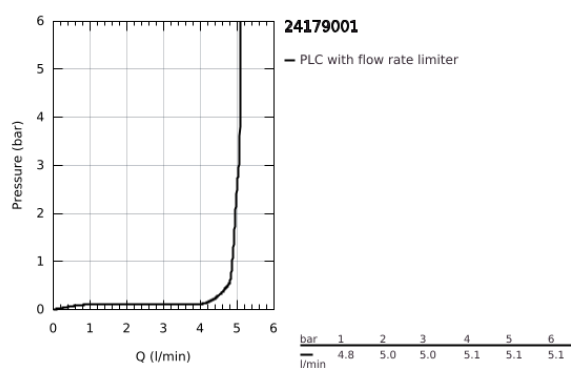


24 179 001 ESSENCE BASIN MIXER 1/2" S-SIZE



PRODUCT DESCRIPTION

- Colour: chrome
- single hole installation
- metal lever
- GROHE SilkMove Energy Saving 28 mm ceramic cartridge with energy saving function via cold start
- with temperature limiter
- GROHE Long-Life finish
- GROHE Water Saving - Less water, perfect flow
- maximum flow rate (at 3 bar): 5 l/min
- GROHE FastFixation Plus installation system
- smooth body
- waste set with push-open plug
- flexible connection hoses
- professional exclusive



24 179 001 ESSENCE BASIN MIXER 1/2" S-SIZE



SPARE PARTS

- 1: Lever (Spare part-nr. 46918000)
 - 2: retaining ring (Spare part-nr. 46715000)
 - 3: Cartridge (Spare part-nr. 46580000)
 - 4: Mousseur (Spare part-nr. 48270000)
 - 5: Escutcheon (Spare part-nr. 48603000)
 - 6: Shank mounting kit (Spare part-nr. 46645000)
 - 7: Waste set with push-open plug (Spare part-nr. 65807000)
 - 8: Mounting wrench (Spare part-nr. 19017000)*
- * Optional accessories