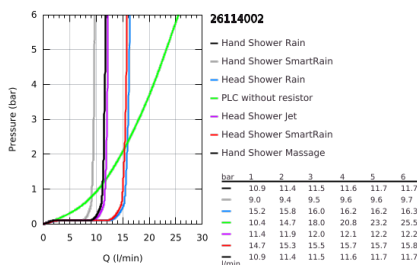
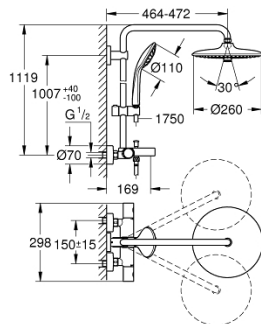


26 114 002 EUPHORIA SYSTEM 260 SHOWER SYSTEM WITH BATH THERMOSTAT FOR WALL MOUNTING



PRODUCT DESCRIPTION (1/2)

- Colour: chrome
- with short shower rail for installation in showers
- consisting of:
 - horizontal swivable 450 mm shower arm
 - exposed thermostat with Aquadimmer function
- allows change between:
 - head shower Euphoria 260 (26 455)
 - spray patterns: Rain, SmartRain, Jet
 - maximum flow rate (at 3 bar): 12.5 l/min
- with ball joint
- rotation angle $\pm 15^\circ$
- bath inlet
- separate diverter for hand shower
- hand shower Euphoria 110 Massage (27 221)
- spray patterns: Rain, Massage, SmartRain
- maximum flow rate (at 3 bar): 16 l/min
- adjustable in height with gliding element
- shower hose Silverflex 1750 mm 1/2" x 1/2" (28 388)
- maximum flow rate system (at 3 bar): 16 l/min (without bath inlet)
- distance between thermostat and upper bracket: 1007 mm
- GROHE TurboStat - compact cartridge with wax thermoelement
- GROHE SafeStop - safety button at 38°C
- GROHE SafeStop Plus - optional temperature limiter at 43°C included
- GROHE DreamSpray - perfect spray pattern
- GROHE LongLife finish
- GROHE SprayDimmer - stepless flow rate adjustment
- GROHE EcoJoy - less water, perfect flow
- Flexible Installation - 1 adjustable bracket for existing drill holes
- Inner WaterGuide - inner insulation for surface protection
- GROHE SpeedClean - effortless limescale removal
- TwistStop - to prevent hose from twisting
- suitable for instantaneous heaters from 18 kW/h
- minimum flow rate 5 l/min

Pure Freude
an Wasser

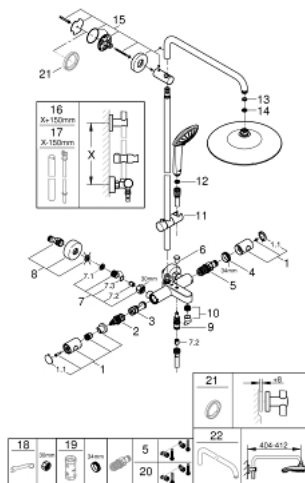


26 114 002 **EUPHORIA SYSTEM 260 SHOWER SYSTEM WITH BATH THERMOSTAT FOR WALL MOUNTING**

PRODUCT DESCRIPTION (2/2)

- professional exclusive

26 114 002 EUPHORIA SYSTEM 260 SHOWER SYSTEM WITH BATH THERMOSTAT FOR WALL MOUNTING



SPARE PARTS

- 1: Metal handle 1/2" (Spare part-nr. 47984000)
- 1.1: Cover cap (Spare part-nr. 6458500M)
- 2: Aquadimmer (Spare part-nr. 47364000)
- 3: Water flow (Spare part-nr. 47887000)
- 4: retaining ring (Spare part-nr. 47743000)
- 5: Thermostatic compact cartridge 1/2" (Spare part-nr. 47439000)
- 6: Diverter knob (Spare part-nr. 65648000)
- 7: Non-return valve (Spare part-nr. 47189000)
- 7.1: Filter (Spare part-nr. 0726400M)
- 7.2: Non-return valve (Spare part-nr. 08565000)
- 7.3: O-Ring Ø17 x Ø2 (Spare part-nr. 0305500M)
- 8: S-union (Spare part-nr. 12662000)
- 9: Diverter (Spare part-nr. 65655000)
- 10: Mousseur (Spare part-nr. 13926000)
- 11: Glide element (Spare part-nr. 12140000)
- 12: Dirt strainer (Spare part-nr. 0700200M)
- 13: Fibre seal dia. Ø 18,5 x Ø 12 x 2 (Spare part-nr. 0138900M)
- 14: Dirt strainer (Spare part-nr. 48007000)
- 15: Shower rail holder (Spare part-nr. 48279000)
- 16: Shower system pipe for retrofitting (Spare part-nr. 48514000)*
- 17: Shower system pipe for retrofitting (Spare part-nr. 48515000)*
- 18: Special spanner (Spare part-nr. 19377000)*
- 19: Socket spanner (Spare part-nr. 19332000)*
- 20: GROHE TurboStat cartridge 1/2" (Spare part-nr. 47175000)*
- 21: Compensation disc (Spare part-nr. 27180000)*
- 22: Shower arm for shower systems (Spare part-nr. 14047000)*

* Optional accessories