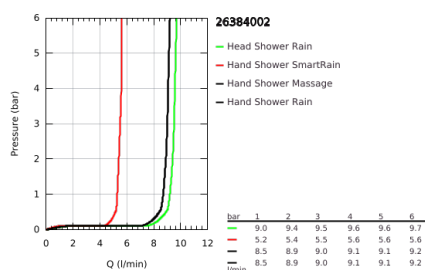
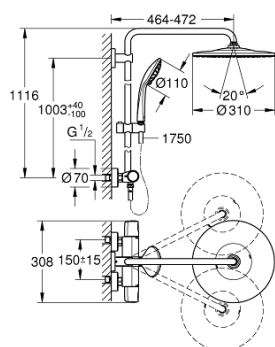


## 26 384 002 EUPHORIA SYSTEM 310 SHOWER SYSTEM WITH THERMOSTATIC MIXER FOR WALL MOUNTING



### PRODUCT DESCRIPTION (1/2)

- Colour: chrome
- consisting of:
  - horizontal swivable 450 mm shower arm
  - exposed thermostat with Aquadimmer function
  - allows change between:
    - head shower Rainshower Mono 310 (26 562)
    - spray pattern:
      - GROHE PureRain
      - maximum flow rate (at 3 bar): 9.5 l/min
    - with ball joint
    - rotation angle  $\pm 15^\circ$
    - hand shower Euphoria 110 Massage (27 239)
  - 3 spray patterns:
    - Rain, Massage, SmartRain
    - maximum flow rate (at 3 bar): 9 l/min
    - adjustable in height with gliding element
  - Silverflex shower hose 1750 mm 1/2" x 1/2" (28 388)
  - GROHE TurboStat compact cartridge with wax thermoelement
  - GROHE SafeStop safety button at 38°C
  - GROHE SafeStop Plus integrated temperature limiter at max 50°C
  - GROHE CoolTouch no risk of scalding
  - GROHE MetalGrip ergonomically shaped metal handles
  - GROHE DreamSpray perfect spray pattern
  - GROHE Long-Life finish
  - GROHE SprayDimmer (stepless flow rate reduction)
  - GROHE Water Saving - Less water, perfect flow
  - GROHE FastFixation upper bracket adjustable
  - Inner WaterGuide for a longer life
  - SpeedClean anti-limescale system
  - TwistStop to prevent hose from twisting
  - suitable for instantaneous heaters from 18 kW/h
  - minimum flow rate 5 l/min
  - optional upgrade: GROHE EasyReach tray (26 362), sold separately

Pure Freude  
an Wasser

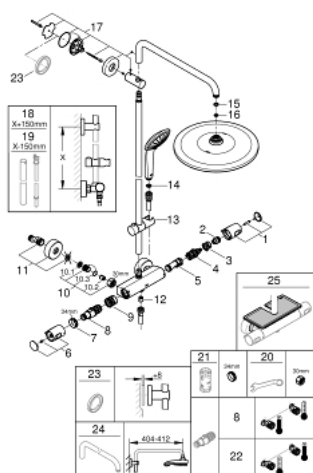


## 26 384 002 **EUPHORIA SYSTEM 310 SHOWER SYSTEM WITH THERMOSTATIC MIXER FOR WALL MOUNTING**

### **PRODUCT DESCRIPTION** (2/2)

- professional exclusive

## 26 384 002 EUPHORIA SYSTEM 310 SHOWER SYSTEM WITH THERMOSTATIC MIXER FOR WALL MOUNTING



### SPARE PARTS

- 1: Shut-off handle (Spare part-nr. 47991000)
- 2: Stop ring (Spare part-nr. 47986000)
- 3: Stop ring (Spare part-nr. 47965000)
- 4: Aquadimmer (Spare part-nr. 47364000)
- 5: Water flow (Spare part-nr. 47887000)
- 6: Temperature control handle (Spare part-nr. 48553000)
- 7: retaining ring (Spare part-nr. 47743000)
- 8: Thermostatic compact cartridge 1/2" (Spare part-nr. 47885000)
- 9: Race (Spare part-nr. 47975000)
- 10: Non-return valve (Spare part-nr. 47189000)
- 10.1: Filter (Spare part-nr. 0726400M)
- 10.2: Non-return valve (Spare part-nr. 08565000)
- 10.3: O-Ring Ø17 x Ø2 (Spare part-nr. 0305500M)
- 11: S-union (Spare part-nr. 12662000)
- 12: Non-return valve (Spare part-nr. 47886000)
- 13: Glide element (Spare part-nr. 12140000)
- 14: Dirt strainer (Spare part-nr. 0700200M)
- 15: Fibre seal dia. Ø 18,5 x Ø 12 x 2 (Spare part-nr. 0138900M)
- 16: Dirt strainer (Spare part-nr. 48007000)
- 17: Shower rail holder (Spare part-nr. 48279000)
- 18: Shower system pipe for retrofitting (Spare part-nr. 48514000)\*
- 19: Shower system pipe for retrofitting (Spare part-nr. 48515000)\*
- 20: Special spanner (Spare part-nr. 19377000)\*
- 21: Socket spanner (Spare part-nr. 19332000)\*
- 22: GROHE TurboStat cartridge 1/2" (Spare part-nr. 47175000)\*
- 23: Compensation disc (Spare part-nr. 27180000)\*
- 24: Shower arm for shower systems (Spare part-nr. 14047000)\*
- 25: GROHE EasyReach tray (Spare part-nr. 26362LN1)\*

\* Optional accessories