

Pure Freude
an Wasser

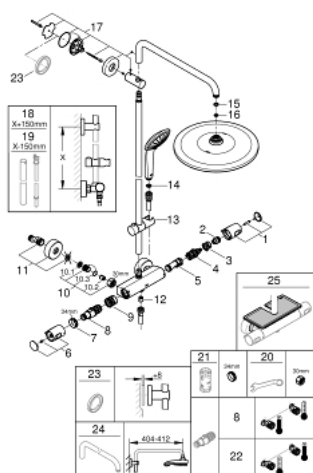


26 384 002 **EUPHORIA SYSTEM 310 SHOWER SYSTEM WITH THERMOSTATIC MIXER FOR WALL MOUNTING**

PRODUCT DESCRIPTION (2/2)

- professional exclusive

26 384 002 EUPHORIA SYSTEM 310 SHOWER SYSTEM WITH THERMOSTATIC MIXER FOR WALL MOUNTING



SPARE PARTS

- 1: Shut-off handle (Spare part-nr. 47991000)
- 2: Stop ring (Spare part-nr. 47986000)
- 3: Stop ring (Spare part-nr. 47965000)
- 4: Aquadimmer (Spare part-nr. 47364000)
- 5: Water flow (Spare part-nr. 47887000)
- 6: Temperature control handle (Spare part-nr. 48553000)
- 7: Fitting ring (Spare part-nr. 47743000)
- 8: Thermostatic compact cartridge 1/2" (Spare part-nr. 47885000)
- 9: Race (Spare part-nr. 47975000)
- 10: Non-return valve (Spare part-nr. 47189000)
- 10.1: Dirt strainer (Spare part-nr. 0726400M)
- 10.2: Non-return valve (Spare part-nr. 08565000)
- 10.3: O-ring $\varnothing 17 \times \varnothing 2$ (Spare part-nr. 0305500M)
- 11: S-union (Spare part-nr. 12662000)
- 12: Non-return valve (Spare part-nr. 47886000)
- 13: Glide element (Spare part-nr. 12140000)
- 14: Dirt strainer (Spare part-nr. 0700200M)
- 15: Fibre seal $\varnothing 18,5 \times \varnothing 12 \times 2$ (Spare part-nr. 0138900M)
- 16: Dirt strainer (Spare part-nr. 48007000)
- 17: Shower rail holder (Spare part-nr. 48279000)
- 18: Shower system pipe for retrofitting (Spare part-nr. 48514000)*
- 19: Shower system pipe for retrofitting (Spare part-nr. 48515000)*
- 20: Special spanner (Spare part-nr. 19377000)*
- 21: Socket spanner (Spare part-nr. 19332000)*
- 22: GROHE TurboStat cartridge 1/2" (Spare part-nr. 47175000)*
- 23: Compensation disc (Spare part-nr. 27180000)*
- 24: Shower arm for shower systems (Spare part-nr. 14047000)*
- 25: GROHE EasyReach tray (Spare part-nr. 26362LN1)*

* Optional accessories