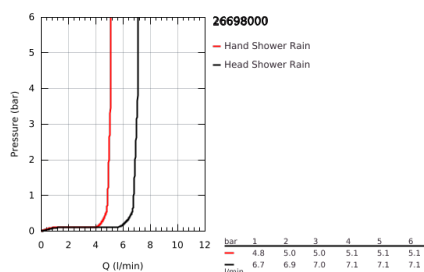
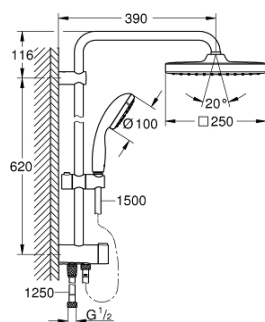


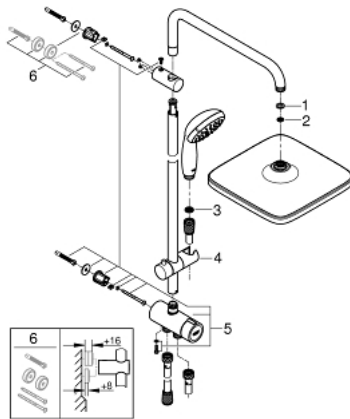
26 698 000 VITALIO START SYSTEM 250 CUBE FLEX SHOWER SYSTEM WITH DIVERTER FOR WALL MOUNTING



PRODUCT DESCRIPTION

- Colour: chrome
- consisting of:
 - horizontal 390 mm shower arm, adjustable before installation
 - change by diverter between hand shower, head shower or head shower
- Eco setting
- head shower Vitalio Comfort 250 (26 695)
- 2 spray patterns (via diverter):
 - Rain, SmartRain
- head shower with white rear cover
- with ball joint
- rotation angle $\pm 10^\circ$
- GROHE Water Saving 9.5 l/min flow limiter
- hand shower Vitalio Start 100 (27 940)
- 1 spray pattern:
 - Rain
- GROHE Water Saving 5.7 l/min. flow limiter
- adjustable in height with gliding element
- distance between diverter and upper bracket: 620 mm
- shower hose VitalioFlex Trend 1500 mm
- shower hose Vitalioflex Trend 1250 mm
- flexible installation: connection to faucet / wall union for water supply with 1/2" thread of the 1250 mm shower hose
- GROHE Water Saving - Less water, perfect flow
- GROHE DreamSpray perfect spray pattern
- GROHE Long-Life finish
- SpeedClean anti-limescale system
- Inner WaterGuide for a longer life
- ShockProof silicone ring prevents damage caused by a shower falling
- Consumer edition

26 698 000 VITALIO START SYSTEM 250 CUBE FLEX SHOWER SYSTEM WITH DIVERTER FOR WALL MOUNTING



SPARE PARTS

1: Fibre seal dia. Ø 18,5 x Ø 12 x 2 (Spare part-nr. 0138900M)

2: Dirt strainer (Spare part-nr. 48007000)

3: Dirt strainer (Spare part-nr. 0700200M)

4: Glide element (Spare part-nr. 12140000)

5: Diverter (Spare part-nr. 48338000)

6: Compensation disc (Spare part-nr. 26496000)*

* Optional accessories