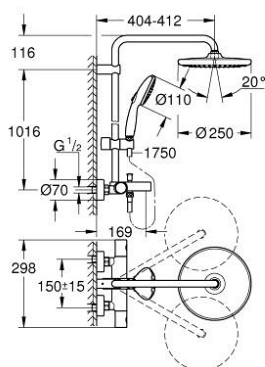


A modern, chrome-finished shower system. It features a large, square overhead rain showerhead mounted on a curved arm. Below it is a handheld showerhead attached to a vertical sliding bar. At the base of the bar is a thermostatic mixer tap with a single-lever handle. A handheld shower hose is connected to the bottom of the bar. The entire system is made of polished chrome and is set against a plain white background.



- Tyc: Chrome
- consisting of:
- horizontal swivable 390 mm shower arm
- exposed thermostat with Aquadimmer function
- allows change between:
- head shower Tempesta 250 (26 666)
- spray pattern:
- Rain
- head shower with white rear cover
- with ball joint
- rotation angle $\pm 10^\circ$
- bath inlet
- separate diverter for hand shower
- hand shower Tempesta 110 (27 597)
- 2 spray patterns:
- Rain, Jet
- adjustable in height with gliding element
- Rotaflex TwistStop shower hose 1750 mm 1/2" x 1/2" (28 410)
- maximum flow rate (at 3 bar): 7.3 l/min
- GROHE Water Saving - Less water, perfect flow
- GROHE TurboStat compact cartridge with wax thermoelement
- GROHE SafeStop safety button at 38°C (calibration required)
- GROHE SafeStop Plus optional temperature limiter at 43°C included
- GROHE SmartSwitch - easily rotate the dial to enjoy your preferred spray option
- GROHE DreamSpray perfect spray pattern
- ShockProof silicone ring prevents damage caused by a shower falling
- GROHE Long-Life finish
- SpeedClean anti-limescale system
- Inner WaterGuide for a longer life
- TwistStop to prevent hose from twisting
- suitable for instantaneous heaters from 18 kW/h
- minimum flow rate 5 l/min

Pure Freude
an Wasser

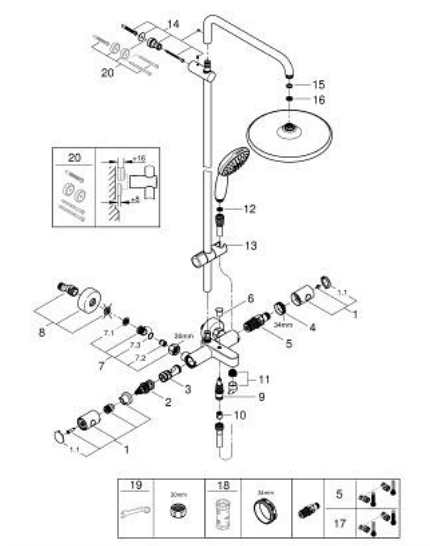


26 978 001 **TEMPESTA SYSTEM 250 SHOWER SYSTEM WITH BATH THERMOSTAT FOR WALL MOUNTING**

PRODUCT DESCRIPTION (2/2)

- professional exclusive

26 978 001 TEMPESTA SYSTEM 250 SHOWER SYSTEM WITH BATH THERMOSTAT FOR WALL MOUNTING



SPARE PARTS

- 1: Metal handle 1/2" (Spare part-nr. 47984000)
- 1.1: Cover cap (Spare part-nr. 6458500M)
- 2: Aquadimmer (Spare part-nr. 47364000)
- 3: Water flow (Spare part-nr. 47887000)
- 4: Fitting ring (Spare part-nr. 47743000)
- 5: Thermostatic compact cartridge 1/2" (Spare part-nr. 47439000)
- 6: Diverter knob (Spare part-nr. 65648000)
- 7: Non-return valve (Spare part-nr. 47189000)
- 7.1: Dirt strainer (Spare part-nr. 0726400M)
- 7.2: Non-return valve (Spare part-nr. 08565000)
- 7.3: O-ring $\varnothing 17 \times \varnothing 2$ (Spare part-nr. 0305500M)
- 8: S-union (Spare part-nr. 12662000)
- 9: Diverter (Spare part-nr. 65655000)
- 10: Non-return valve (Spare part-nr. 08565000)
- 11: Mousseur (Spare part-nr. 13926000)
- 12: Dirt strainer (Spare part-nr. 0700200M)
- 13: Glide element (Spare part-nr. 48609000)
- 14: Shower rail holder (Spare part-nr. 48423000)
- 15: Fibre seal $\varnothing 18,5 \times \varnothing 12 \times 2$ (Spare part-nr. 0138900M)
- 16: Dirt strainer (Spare part-nr. 48007000)
- 17: GROHE TurboStat cartridge 1/2" (Spare part-nr. 47175000)*
- 18: Socket spanner (Spare part-nr. 19332000)*
- 19: Special spanner (Spare part-nr. 19377000)*
- 20: Compensation disc (Spare part-nr. 26496000)*

* Optional accessories