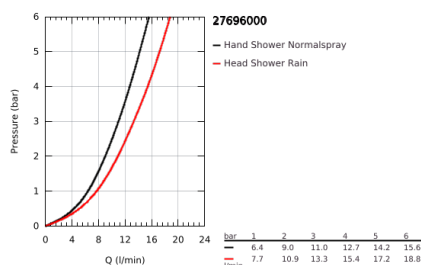
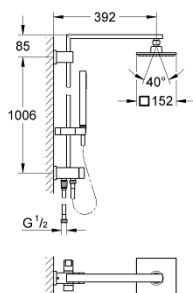


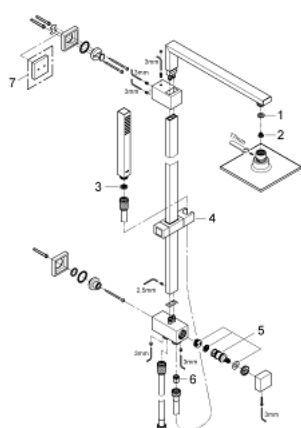
27 696 000 EUPHORIA CUBE SYSTEM 150 SHOWER SYSTEM WITH DIVERTER FOR WALL MOUNTING



PRODUCT DESCRIPTION

- Colour: chrome
- consisting of:
- shower arm
- projection 400 mm
- change between hand and head shower by diverter
- head shower Euphoria Cube 152 mm x 152 mm
- spray pattern: Rain
- maximum flow rate (at 3 bar): 13.5 l/min
- with ball joint
- rotation angle $\pm 20^\circ$
- Euphoria Cube Stick hand shower (27 698)
- maximum flow rate (at 3 bar): 11 l/min
- adjustable in height with gliding element
- Silverflex shower hose 1750 mm 1/2" x 1/2" (28 388)
- Silverflex shower hose 800 mm
- connection to water supply with 1/2" thread of the 800 mm shower hose to faucet / wall union
- GROHE DreamSpray perfect spray pattern
- GROHE Long-Life finish
- SpeedClean anti-limescale system
- TwistStop to prevent hose from twisting
- suitable for instantaneous heaters from 18 kW/h
- minimum flow rate 7 l/min

27 696 000 EUPHORIA CUBE SYSTEM 150 SHOWER SYSTEM WITH DIVERTER FOR WALL MOUNTING



SPARE PARTS

- 1: Fibre seal dia. Ø 18,5 x Ø 12 x 2 (Spare part-nr. 0138900M)
- 2: Dirt strainer (Spare part-nr. 0676800M)
- 3: Dirt strainer (Spare part-nr. 0700200M)
- 4: Glide element (Spare part-nr. 48180000)
- 5: Repl. kit f. rotary valve (Spare part-nr. 45915000)
- 6: Non-return valve (Spare part-nr. 08565000)
- 7: Compensation disc (Spare part-nr. 27933000)*

* Optional accessories