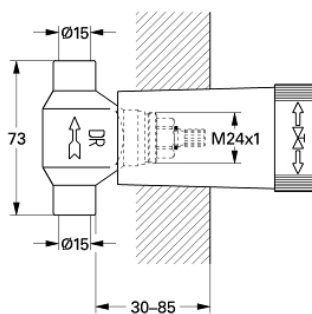


29 801 000 **CONCEALED STOP-VALVE, 1/2"**

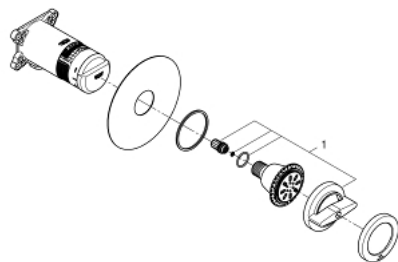


PRODUCT DESCRIPTION

- pre-assembled headpart 1/2"
- short spindle
- protection sleeve
- soldered connection \varnothing 15 mm
- DR-brass
- without handle



29 801 000 CONCEALED STOP-VALVE, 1/2"



SPARE PARTS

- 1: Headpart 1/2" (Spare part-nr. 07146000)
- 1.1: O-Ring $\varnothing 6 \times \varnothing 2$ (Spare part-nr. 0128300M)
- 1.2: O-Ring $\varnothing 18,2 \times \varnothing 1,7$ (Spare part-nr. 0392400M)
- 1.3: Seal (Spare part-nr. 0529100M)
- 2: Seat (Spare part-nr. 45023000)