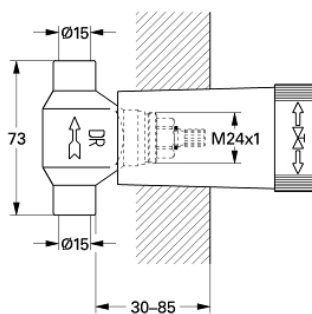


29 801 000 CONCEALED STOP-VALVE, 1/2"

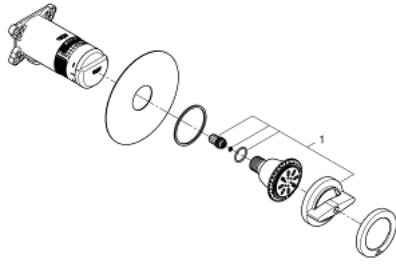


PRODUCT DESCRIPTION

- pre-assembled headpart 1/2"
- short spindle
- protection sleeve
- soldered connection \varnothing 15 mm
- DR-brass
- without handle



29 801 000 CONCEALED STOP-VALVE, 1/2"



SPARE PARTS

1: Headpart 1/2" (Spare part-nr. 07146000)

1.1: Sealing washer $\varnothing 6 \times \varnothing 2$ (Spare part-nr. 0128300M)

1.2: O-ring $\varnothing 18.2 \times \varnothing 1.7$ (Spare part-nr. 0392400M)

1.3: Seal (Spare part-nr. 0529100M)

2: Seat (Spare part-nr. 45023000)