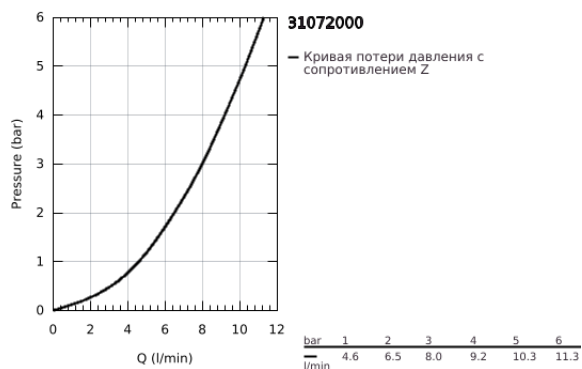
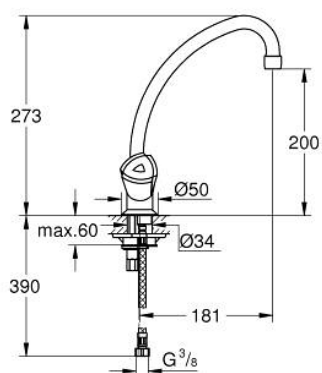


31 072 000 **COSTA L**



#### ОПИСАНИЕ ПРОДУКТА

- Colour: хром
- ABS handles
- с теплоизоляцией
- GROHE Long-Life finish - стойкое долговечное покрытие
- Изолированный водоток - вода не контактирует с металлами корпуса смесителя
- вентили GROHE Long-Life
- аэратор
- поворотный трубкообразный излив
- угол поворота 360°
- GROHE QuickMount 2.0
- гибкая подводка 3/8"



The diagram illustrates the exploded view of the 3D printer assembly. It shows the main body (1) with a nozzle (1.1) and a filament spool (1.2). A filament guide (2) is shown with a filament (2.1) passing through it. The filament is then fed into the main body (1) where it is extruded through the nozzle (1.1) to form a layer (3.2). The filament guide (2) is also shown with a filament (2.1) passing through it. The filament is then fed into the main body (1) where it is extruded through the nozzle (1.1) to form a layer (3.2).

3.2: O-кольцо Ø12 x Ø2 (Spare part-nr. 0128000M)