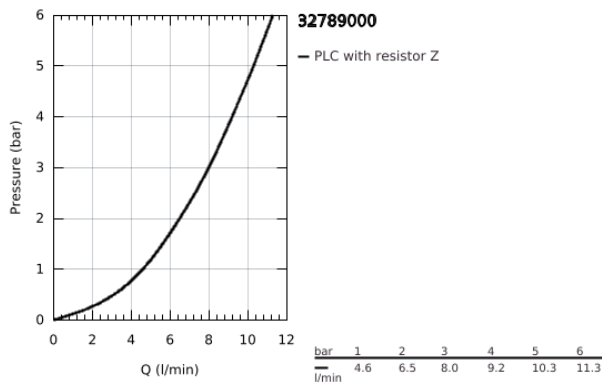
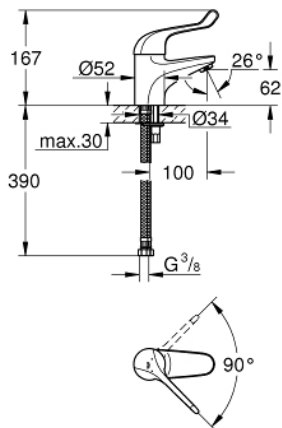


32 789 000 **EUROSMART CARE SINGLE-LEVER SAFETY BASIN MIXER 1/2"**

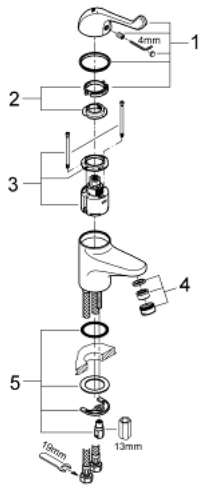


**PRODUCT DESCRIPTION**

- Colour: chrome
- single hole installation
- smooth body
- GROHE LongLife finish
- maximum flow rate (at 3 bar): 8 l/min
- ceramic cartridge
- adjustable flow rate limiter
- adjustable temperature limiter
- adjustable minimum flow rate 6 l/min.
- laminar flow straightener
- metal lever
- lever length 120 mm
- rapid installation system
- flexible connection hoses



32 789 000 **EUROSMART CARE SINGLE-LEVER SAFETY BASIN MIXER 1/2"**



**SPARE PARTS**

- 1: Lever 120 mm (Spare part-nr. 46686000)
- 2: Temperature limiter (Spare part-nr. 46277000)
- 3: Cartridge SMB (Spare part-nr. 46278000)
- 4: Laminar flow straightener (Spare part-nr. 13960000)
- 5: Shank mounting kit (Spare part-nr. 46249000)