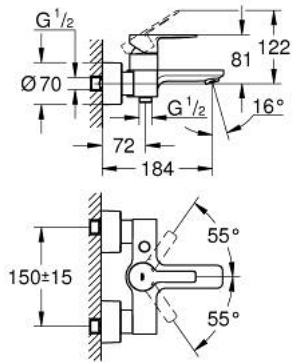
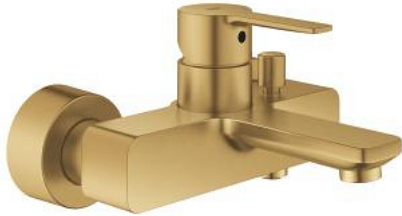


33 849 GN1 LINEARE SINGLE-LEVER BATH MIXER 1/2"



PRODUCT DESCRIPTION

- Typ: brushed cool sunrise
- wall mounted
- metal lever
- GROHE SilkMove 35 mm ceramic cartridge
- with temperature limiter
- GROHE LongLife finish
- automatic diverter: bath/shower
- mousseur
- shower outlet 1/2"
- integrated non-return valve
- covered S-unions
- protected against backflow
- min. recommended pressure 1.0 bar

33 849 GN1 LINEARE SINGLE-LEVER BATH MIXER 1/2"



SPARE PARTS

- 1: lever (Spare part-nr. 46987GN0)
- 2: Cartridge (Spare part-nr. 46374000)
- 3: flow control (Spare part-nr. 13952GN0)
- 4: diverter knob (Spare part-nr. 64309GN0)
- 5: diverter (Spare part-nr. 46947GN0)
- 6: Non-return valve (Spare part-nr. 08565000)
- 7: Screw connection 1/2" (Spare part-nr. 45044000)
- 8: S-union (Spare part-nr. 12693GN0)
- 9: Extension set, 30 mm (Spare part-nr. 46238000)*
- 10: Special spanner (Spare part-nr. 19377000)*
- 11: Socket spanner (Spare part-nr. 19332000)*

* Optional accessories