

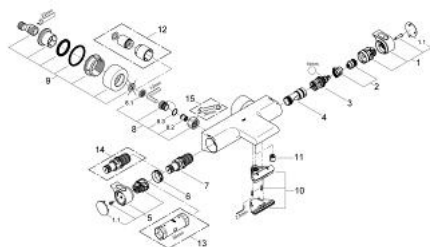
34 466 001 GROHTHERM 2000 THERMOSTATIC BATH MIXER 1/2"



PRODUCT DESCRIPTION

- Tyc: Chrome
- wall mounted
- 100% GROHE CoolTouch consisting of safety housing + S-unions with CoolTouch escutcheons
- GROHE Long-Life finish
- GROHE Aqua Paddles, ergonomically shaped handles
- GROHE SafeStop safety button at 38°C (calibration required)
- GROHE SafeStop Plus integrated temperature limiter at max 50° C
- GROHE TurboStat compact cartridge with wax thermoelement
- integrated mixed water shut off
- GROHE AquaDimmer Eco with multiple function:
- integrated GROHE EcoButton (economy button with economy stop for shower)
- flow control
- shower bottom outlet 1/2"
- diverter: bath/shower
- GROHE XL Waterfall
- flow straightener
- built-in non return valves
- dirt strainers
- protected against backflow
- covered S-unions, CoolTouch escutcheons with wall sealing
- optional upgrade: GROHE EasyReach shower tray (18 608 001)
- integrated flow limiter 14 l/min in the shower outlet
- GROHE Water Saving - Less water, perfect flow

34 466 001 GROHTHERM 2000 THERMOSTATIC BATH MIXER 1/2"



SPARE PARTS

- 1: Shut-off handle (Spare part-nr. 47923000)
- 1.1: Cover cap (Spare part-nr. 4788300M)
- 2: Stop (Spare part-nr. 47925000)
- 3: Aquadimmer (Spare part-nr. 12433000)
- 4: Water flow (Spare part-nr. 47751000)
- 5: Temperature control handle (Spare part-nr. 47926000)
- 6: Fitting ring (Spare part-nr. 47743000)
- 7: Thermostatic compact cartridge 1/2" (Spare part-nr. 47885000)
- 8: Non-return valve (Spare part-nr. 47189000)
- 8.1: Dirt strainer (Spare part-nr. 0726400M)
- 8.2: Non-return valve (Spare part-nr. 08565000)
- 8.3: O-ring $\varnothing 17 \times \varnothing 2$ (Spare part-nr. 0305500M)
- 9: S-union (Spare part-nr. 12693000)
- 10: Water flow (Spare part-nr. 47924000)
- 11: Non-return valve (Spare part-nr. 47886000)
- 12: Extension set, 30 mm (Spare part-nr. 46238000)*
- 13: Socket spanner (Spare part-nr. 19332000)*
- 14: GROHE TurboStat cartridge 1/2" (Spare part-nr. 47175000)*
- 15: Special spanner (Spare part-nr. 19377000)*

* Optional accessories