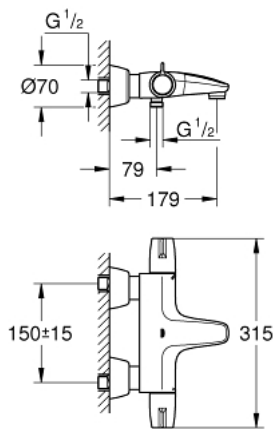


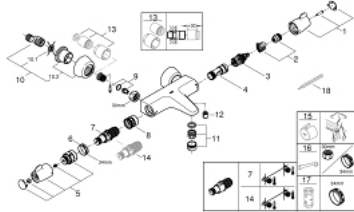
34 665 000 GROHTHERM SPECIAL THERMOSTATIC BATH MIXER 1/2"



PRODUCT DESCRIPTION

- Tyc: Chrome
- wall mounted
- ergonomic metal wing handles
- GROHE Aquadimmer handle with multiple function
- flow control
- integrated mixed water shut off
- diverter bath/shower
- GROHE TurboStat - compact cartridge with wax thermoelement
- temperature scale handle with internal safety stop between 35°C and 43°C
- easy thermal disinfection by optional temperature unlocking handle 47 994 000
- shower bottom outlet 1/2" with integrated non return valve
- metal temperature safety stop
- laminar mousseur
- dirt strainers
- with S-unions and with covers
- GROHE FastFixation for fast exchange of non return valves in connections
- 100% GROHE CoolTouch consisting of safety housing + S-unions with CoolTouch escutcheons
- GROHE LongLife finish
- GROHE SafetyPlus fixed temperature stop

34 665 000 GROHTHERM SPECIAL THERMOSTATIC BATH MIXER 1/2"



SPARE PARTS

- 1: Shut-off handle (Spare part-nr. 49004000)
- 2: Stop (Spare part-nr. 47925000)
- 3: Aquadimmer (Spare part-nr. 12433000)
- 4: Water flow (Spare part-nr. 47751000)
- 5: Temperature control handle (Spare part-nr. 49005000)
- 6: Fitting ring (Spare part-nr. 47743000)
- 7: Thermostatic compact cartridge 1/2" (Spare part-nr. 47439000)
- 7: Thermostatic compact cartridge 1/2" (Spare part-nr. 47885000)
- 8: Race (Spare part-nr. 47975000)
- 9: Non-return valves (Spare part-nr. 47979000)
- 10: S-union (Spare part-nr. 12058000)
- 10.1: Seal (Spare part-nr. 0138600M)
- 10.2: Covering escutcheon (Spare part-nr. 45545000)
- 11: Laminar flow straightener (Spare part-nr. 49015000)
- 12: Non-return valve (Spare part-nr. 08565000)
- 13: Extension set, 30 mm (Spare part-nr. 46238000)*
- 14: GROHE TurboStat cartridge 1/2" (Spare part-nr. 47175000)*
- 15: Temperature unlocking handle (Spare part-nr. 47994000)*
- 16: Special spanner (Spare part-nr. 19377000)*
- 17: Socket spanner (Spare part-nr. 19332000)*
- 18: Adjusting thermometer (°C) (Spare part-nr. 19001000)*

* Optional accessories