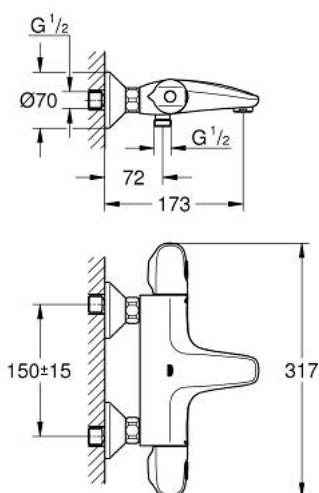


## 34 816 243 3 GROHTHERM 1000 THERMOSTATIC BATH MIXER 1/2"



### PRODUCT DESCRIPTION

- Tyc: matte black
- wall mounted
- GROHE CoolTouch safety housing
- GROHE MetalGrip ergonomically shaped metal handles
- GROHE SafeStop safety button at 38°C ( calibration required )
- GROHE SafeStop Plus optional temperature limiter at 43°C included
- GROHE TurboStat compact cartridge with wax thermoelement
- integrated mixed water shut off
- GROHE AquaDimmer Eco with multiple function:
- integrated GROHE EcoButton (economy button with economy stop for shower)
- flow control
- diverter: bath/shower
- shower bottom outlet 1/2"
- mousseur
- built-in non return valves
- dirt strainers
- protected against backflow
- S-unions
- metal escutcheon
- GROHE Water Saving - Less water, perfect flow
- professional exclusive

## 34 816 243 3 **GROHTHERM 1000 THERMOSTATIC BATH MIXER 1/2"**



### SPARE PARTS

- 1: GRT 1000 New shut-off handle (Spare part-nr. 479762430)
- 1.1: cap (Spare part-nr. 47974243M)
- 2: Stop (Spare part-nr. 47977000)
- 3: Aquadimmer (Spare part-nr. 12433000)
- 4: Water flow (Spare part-nr. 47751000)
- 5: GRT 1000 New temperature control handle (Spare part-nr. 479732430)
- 5.1: cap (Spare part-nr. 47974243M)
- 6: Fitting ring (Spare part-nr. 47743000)
- 7: Thermostatic compact cartridge 1/2" (Spare part-nr. 47439000)
- 8: Race (Spare part-nr. 47975000)
- 9: flow control (Spare part-nr. 139522430)
- 10: Non-return valve (Spare part-nr. 471892430)
- 10.1: Dirt strainer (Spare part-nr. 0726400M)
- 10.2: Non-return valve (Spare part-nr. 08565000)
- 10.3: O-ring  $\varnothing 17 \times \varnothing 2$  (Spare part-nr. 0305500M)
- 11: S-union (Spare part-nr. 120752430)
- 11.1: Seal (Spare part-nr. 0138600M)
- 11.2: Escutcheon (Spare part-nr. 02210243M)
- 12: Extension 3/4", 20 mm (Spare part-nr. 0713000M)\*
- 13: Special spanner (Spare part-nr. 19377000)\*
- 14: Socket spanner (Spare part-nr. 19332000)\*
- 15: GROHE TurboStat cartridge 1/2" (Spare part-nr. 47175000)\*

\* Optional accessories