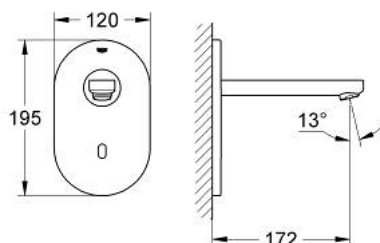


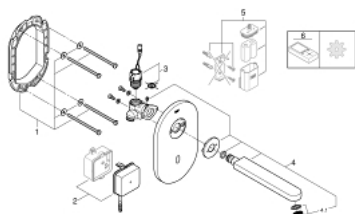
36 273 000 EUROECO COSMOPOLITAN E INFRA-RED ELECTRONIC WALL BASIN TAP WITHOUT MIXING DEVICE



PRODUCT DESCRIPTION

- Tyc: Chrome
- with infrared sensor for bi-directional communication for monitoring, configuration and servicing
- for cold or premixed water
- with transformer 100-230 V AC, 50-60 Hz, 6 V DC
- GROHE Long-Life finish
- GROHE Water Saving - Less water, perfect flow
- maximum flow rate (at 3 bar): 5 l/min
- chrome escutcheon
- chrome spout
- projection 172 mm
- 7 pre-set programs:
 - auto flush
 - thermal disinfection
 - cleaning mode
- additional functions and precise settings by remote control 36 407
- set for final installation for concealed fitting box
- 36 336 001/36 337 001
- CE approved
- noise classification I in accordance with DIN 4109
- min. recommended pressure 1.0 bar

**36 273 000 EUROECO COSMOPOLITAN E INFRA-RED ELECTRONIC WALL BASIN TAP
WITHOUT MIXING DEVICE**



SPARE PARTS

- 1: Mounting frame (Spare part-nr. 42419000)
- 2: Switching power supply (Spare part-nr. 42470000)
- 3: Solenoid valve (Spare part-nr. 42469000)
- 4: Spout (Spare part-nr. 42445000)
- 4.1: Mousseur (Spare part-nr. 48159000)
- 5: Battery housing (Spare part-nr. 42393000)*
- 6: Remote control (Spare part-nr. 36407001)*

* Optional accessories