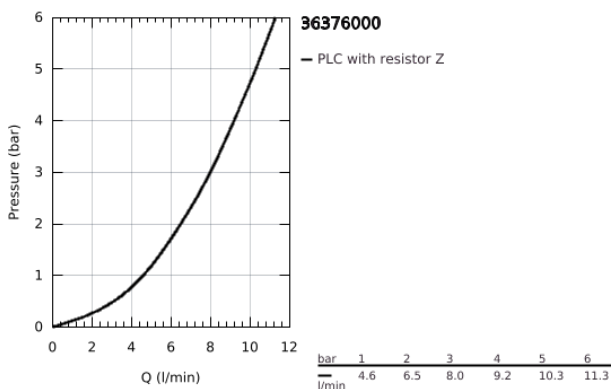
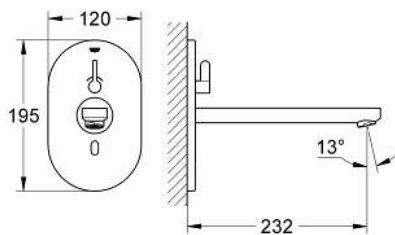


## 36 376 000 EUROSMART COSMOPOLITAN E INFRA-RED ELECTRONIC BASIN MIXER WITH MIXING DEVICE AND ADJUSTABLE TEMPERATURE LIMITER

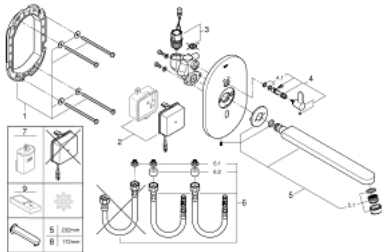


### PRODUCT DESCRIPTION

- Colour: chrome
- with infrared sensor for bi-directional communication for monitoring, configuration and servicing
- with transformer 100-230 V AC, 50-60 Hz, 6 V DC
- GROHE LongLife finish
- maximum flow rate (at 3 bar): 8 l/min
- laminar flow straightener
- chrome escutcheon
- chrome spout
- projection 232 mm
- 7 pre-set programs:
  - auto flush
  - thermal disinfection
  - cleaning mode
- additional functions and precise settings by remote control 36 407
- set for final installation for concealed fitting box
- 36 339 001
- CE approved
- noise classification I in accordance with DIN 4109
- min. recommended pressure 1.0 bar



## 36 376 000 EUROSART COSMOPOLITAN E INFRA-RED ELECTRONIC BASIN MIXER WITH MIXING DEVICE AND ADJUSTABLE TEMPERATURE LIMITER



### SPARE PARTS

- 1: Frame (Spare part-nr. 42419000)
  - 2: Switching power supply (Spare part-nr. 42470000)
  - 3: Solenoid valve (Spare part-nr. 42469000)
  - 4: Mixing lever (Spare part-nr. 42441000)
  - 4.1: Sealing washer (Spare part-nr. 4284000M)
  - 5: Spout (Spare part-nr. 42418000)
  - 5.1: Laminar flow straightener (Spare part-nr. 13960000)
  - 6: Connection hose set (Spare part-nr. 42417000)
  - 6.1: Filter (Spare part-nr. 4241300M)
  - 6.2: Non-return valve (Spare part-nr. 4240400M)
  - 7: Battery housing (Spare part-nr. 42393000)\*
  - 8: Spout (Spare part-nr. 42420000)\*
  - 9: Remote control (Spare part-nr. 36407001)\*
- \* Optional accessories