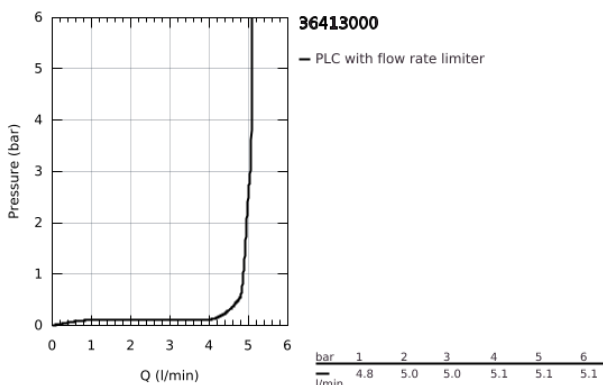
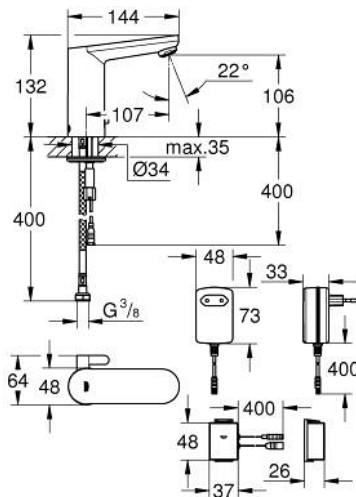


36 413 000 EUROSMART COSMOPOLITAN E BLUETOOTH INFRA-RED ELECTRONIC BASIN TAP 1/2" WITH MIXING DEVICE



PRODUCT DESCRIPTION (1/2)

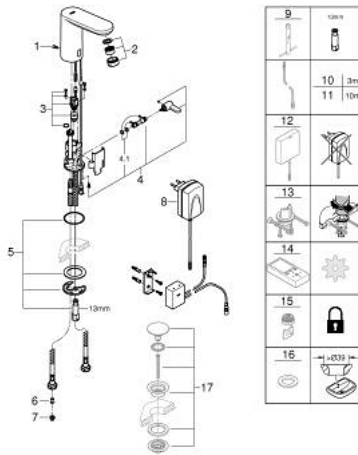
- Colour: chrome
- with infrared sensor and Bluetooth module for bi-directional communication for monitoring, configuration and service purpose
- with plug transformer 100-240 V AC, 50-60 Hz, 6.75 V DC
- rapid installation system
- mixing device with adjustable hot water limiter
- GROHE LongLife finish
- GROHE EcoJoy - less water, perfect flow
- maximum flow rate (at 3 bar): 5 l/min
- with integrated solenoid valve
- integrated non-return valves and dirt strainers
- with Bluetooth 4.0* for wireless data communication
- for Apple** and Android devices
- Bluetooth range (max. 10 m) varies depending on used materials and walls between transmitter and receiver
- monitoring
- password protected products
- app detects all Bluetooth products in range
- auto flush cycles and timing last auto flush
- usage per day / 30 days
- thermal disinfection cycles and timings last disinfection
- configuration
- detection range and shut off delay
- auto flush
- thermal disinfection
- cleaning mode
- 2 on/off timers
- identification by name
- service
- send and save 3 profiles
- reset functions
- hard and software version
- CE approved

36 413 000 EUROSMART COSMOPOLITAN E BLUETOOTH INFRA-RED ELECTRONIC BASIN TAP 1/2" WITH MIXING DEVICE

PRODUCT DESCRIPTION (2/2)

- noise classification I in accordance with DIN 4109
- type of protection faucet IP 59K
- Mobile devices and GROHE IR Remote App*** are not included in delivery and have to be ordered separately via an authorised Apple store/store/iTunes or Google Play store.
- * The Bluetooth word mark and logos are registered trademarks owned by Bluetooth SIG, Inc. and any use of such marks by Grohe AG is under license. Other trademarks and trade names are those of their respective owners.
- ** Apple, the Apple logo, iPod, iPod Touch, iPhone and iTunes are trademarks of Apple Inc., registered in the U.S. and other countries. Apple is not responsible for the function of this device or its compliance with safety and regulatory standards.
- *** Available for free via iTunes app or Google Play store.

36 413 000 EUROSMART COSMOPOLITAN E BLUETOOTH INFRA-RED ELECTRONIC BASIN TAP 1/2" WITH MIXING DEVICE



SPARE PARTS

- 1: Screw (Spare part-nr. 4283100M)
- 2: Mousseur (Spare part-nr. 48159000)
- 3: Solenoid valve (Spare part-nr. 42469000)
- 4: Mixing lever (Spare part-nr. 42401000)
- 4.1: Sealing washer (Spare part-nr. 4284000M)
- 5: Mounting set (Spare part-nr. 42400000)
- 6: Non-return valve (Spare part-nr. 4257200M)
- 7: Filter (Spare part-nr. 4241300M)
- 8: Mains adaptor (Spare part-nr. 42388000)
- 9: Mounting wrench (Spare part-nr. 19017000)*
- 10: Power extension cable (Spare part-nr. 36340000)*
- 11: Power extension cable (Spare part-nr. 36341000)*
- 12: Switch-mode power supply (Spare part-nr. 36338000)*
- 13: Rotation lock (Spare part-nr. 36276000)*
- 14: Remote control (Spare part-nr. 36407001)*
- 15: Mousseur (Spare part-nr. 36133000)*
- 16: Escutcheon (Spare part-nr. 36370000)*
- 17: Waste set with push-open plug (Spare part-nr. 65807000)*

* Optional accessories