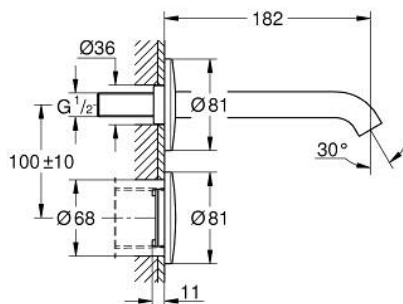
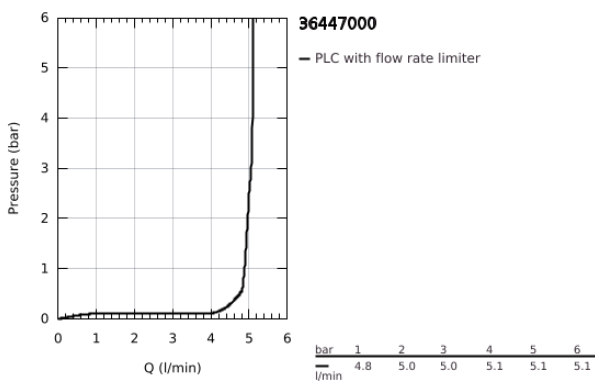


36 447 000 ESSENCE E INFRA-RED ELECTRONIC WALL BASIN TAP WITHOUT MIXING DEVICE

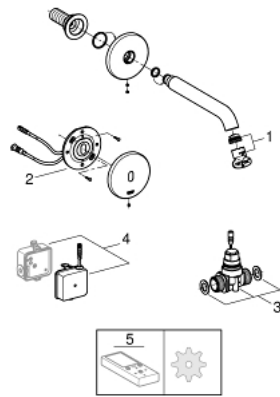


PRODUCT DESCRIPTION

- Colour: chrome
- with infrared sensor for bi-directional communication for monitoring, configuration and servicing
- for cold or premixed water
- with transformer 100-230 V AC, 50-60 Hz, 6 V DC
- GROHE EcoJoy - less water, perfect flow
- maximum flow rate (at 3 bar): 5 l/min
- 7 pre-set programs:
 - auto flush
 - thermal disinfection
 - cleaning mode
- additional functions and precise settings by remote control 36 407
- set for final installation
- for use with Rapid SL 38 748 002 or roughing-in set 36 264 001
- CE approved
- noise classification I in accordance with DIN 4109
- min. recommended pressure 1.0 bar



36 447 000 **ESSENCE E INFRA-RED ELECTRONIC WALL BASIN TAP WITHOUT MIXING DEVICE**



SPARE PARTS

- 1: Laminar flow straightener (Spare part-nr. 48376000)
- 2: Electronic (Spare part-nr. 42484000)
- 3: Solenoid valve complete (Spare part-nr. 42740000)
- 4: Switching power supply (Spare part-nr. 42470000)
- 5: Remote control (Spare part-nr. 36407001)*

* Optional accessories