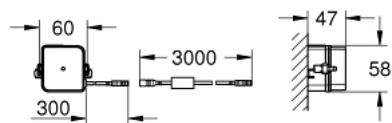
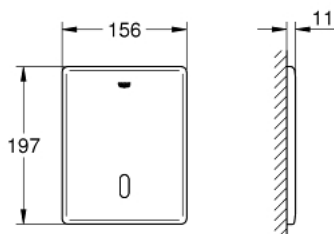


38 393 SD1 TECTRON SKATE INFRA-RED ELECTRONIC FOR WC FLUSH VALVE

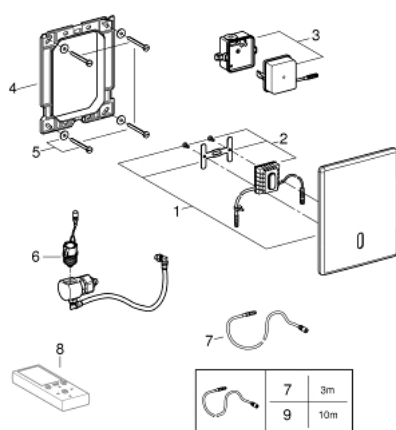


PRODUCT DESCRIPTION

- Tyc: stainless steel
- with transformer 100-230 V AC, 50-60 Hz, 6 V DC
- concealed installation
- front plate 156 x 197 mm
- infra-red control
- solenoid valve
- 7 pre-set programs:
 - auto flush
 - cleaning mode
 - pre-flush on/off
- additional functions and precise settings by remote control 36 407
- adjustable flush (3 - 9 l) by hand and remote
- CE approved
- for use with concealed WC flush valve 37 048 000 and 38 519 001



38 393 SD1 TECTRON SKATE INFRA-RED ELECTRONIC FOR WC FLUSH VALVE



SPARE PARTS

- 1: Top plate (Spare part-nr. 42449SD0)
- 2: Electronic (Spare part-nr. 42455000)
- 3: Switching power supply (Spare part-nr. 42470000)
- 4: Mounting frame (Spare part-nr. 42736000)
- 5: Fixing set (Spare part-nr. 4308500M)
- 6: Solenoid valve (Spare part-nr. 42469000)
- 7: Extension cable (Spare part-nr. 36221000)
- 8: Remote control (Spare part-nr. 36407001)*
- 9: Extension cable (Spare part-nr. 36222000)*
- * Optional accessories