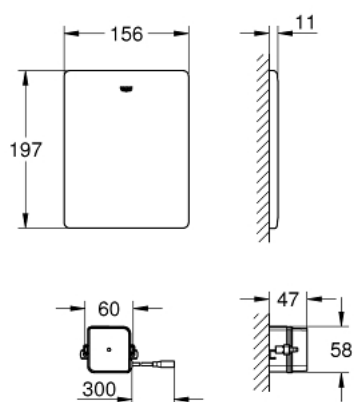


38 934 SD0 WC CONTROL FOR MANUAL REMOTE ACTUATION

PRODUCT DESCRIPTION

- Tyc: stainless steel
- for concealed flushing cisterns, 6 - 9 l
- for connecting one or more potential-free actuation buttons via cable
- suitable for support rails for the disabled with integrated actuation button from Hewi, Keuco, Lehnert, Normbau, Pressalit, AMS, Deubad, Erlau, FRELÜ, FSB
- stainless steel flush plate 156 x 197 mm
- transformer for external installation
- operating voltage 230 V AC, 50/60 Hz, 4.0 VA
- servo motor
- 3 m connecting cable
- for the connection of transformer and electronic
- 3 m connection cable with plug
- CE approved
- delivery range without actuation button/support rails



38 934 SD0 WC CONTROL FOR MANUAL REMOTE ACTUATION



SPARE PARTS

- 1: Electronic (Spare part-nr. 42611000)
- 2: Mounting frame (Spare part-nr. 42736000)
- 3: Fixing set (Spare part-nr. 4215800M)
- 4: Switching power supply (Spare part-nr. 42470000)
- 5: Fixing set (Spare part-nr. 4308500M)
- 6: Servo motor (Spare part-nr. 42612000)
- 7: Pop-up rod for servo motor (Spare part-nr. 43306000)
- 8: Extension cable (Spare part-nr. 36221000)
- 9: Hose (Spare part-nr. 43307000)
- 10: Remote control (Spare part-nr. 36407001)*
- 11: Extension cable (Spare part-nr. 36222000)*

* Optional accessories