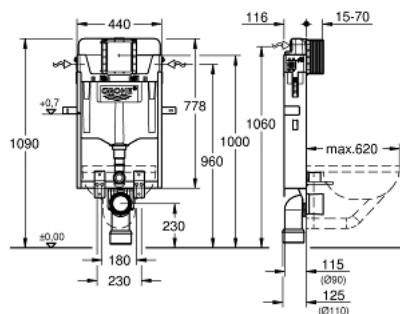


## A white plastic water dispenser unit with a stainless steel frame. The unit features a large white reservoir at the top with a 'GROHE' logo and a grid of six icons showing various water settings. Below the reservoir is a central white spout. The unit is mounted on a stainless steel base with two red push buttons. The entire unit is shown against a white background.



- with flushing cistern GD 2, 6 - 9 l
- 778 x 440 x 116 mm
- for single installation
- 2 WC fixing bolts
- distance of fixing bolts 180/230 mm
- fixing device for ceramic
- outlet bend Ø 90 mm
- reducer Ø 90/110 mm
- inlet and outlet connecting set
- flushing cistern GD 2, 6 - 9 l, containing following features:
- adjustment ex factory 6 l and 3 l
- pneumatic discharge valve offering 3 modes of operation: dual flush or start/stop or single flush
- water supply from left/right/back or top
- low noise (group I acc. to German Noise Specification)
- cistern insulated against condensation
- ½" angle valve with push fit flexible hose union
- no tools required for the installation of the inspection shaft including protection during construction phase
- for vertical or horizontal use
- preparation for shower toilets with additional accessory 40 899 000 (sold separately)
- for mounting of small flush plates please order revision shaft 40 911 000 (sold separately)

## 39 165 000 UNISET ELEMENT FOR WC



### SPARE PARTS

- 1: Threaded bolt (Spare part-nr. 4276400M)
  - 2: WC inlet and outlet connecting set (Spare part-nr. 37311K00)
  - 2.1: Basin fastening (Spare part-nr. 43511SH0)
  - 2.2: Connector (Spare part-nr. 37119000)
  - 3: 4" outlet adaptor for Rapid SL (Spare part-nr. 42242000)
  - 4: PP-outlet bend Ø 90 mm (Spare part-nr. 42327000)
  - 5: Support for outlet bend (Spare part-nr. 42243000)
  - 6: Inspection shaft (Spare part-nr. 66783000)
  - 7: Filling valve (Spare part-nr. 37095000)
  - 7.1: Lever (Spare part-nr. 43734000)
  - 7.1.1: Sealing washer (Spare part-nr. 4377000M)
  - 7.2: Valve head (Spare part-nr. 43536000)
  - 7.3: Membrane (Spare part-nr. 4375800M)
  - 7.4: Screw cap (Spare part-nr. 43735000)
  - 7.5: Valve FLOAT, 5 pcs.. (Spare part-nr. 4379100M)
  - 7.6: Set of seals (Spare part-nr. 43722000)\*
  - 8: Support device (Spare part-nr. 42246000)
  - 9: Connecting hose (Spare part-nr. 42397000)
  - 9.1: O-Ring (Spare part-nr. 0319100M)
  - 10: Service valve pack 10 (Spare part-nr. 42343000)
  - 11: Dual Flush discharge valve AV1 (Spare part-nr. 42320000)
  - 11.1: Extension for overflow pipe (Spare part-nr. 42313000)
  - 11.2: Pneumatic hose (Spare part-nr. 42319000)
  - 11.3: Sealing washer (Spare part-nr. 42310000)
  - 12: Valve seat for GD2 (Spare part-nr. 42315000)
  - 13: 4.5 l adapter for GD2 (Spare part-nr. 42333000)\*
  - 14: Dual flush valve set (Spare part-nr. 38796000)\*
  - 15: Retrofit kit for shower toilets Sensia Arena and IGS (Spare part-nr. 40899000)\*
- \* Optional accessories